



Funding your Research Career

NRSA and beyond

Office for Nursing Research

October 2007



Research funding options

For what purpose:

- Research studies
- Research career training
- Research program development

By eligibility

- Doctoral students only
- US citizens only
- Post-doctoral only

Is there an NRSA proposal in
your future?



National Research Service Awards
(NRSA)

F31 Fellowships from NIH



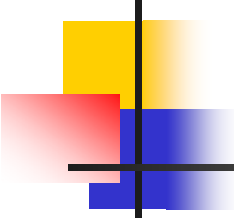
What is an NRSA (Ruth L. Kirschstein Individual National Research Service Award)?

- Individual pre-doctoral fellowship
- Designated as F31 in federal code
- Up to 5 years support for research training (including dissertation)
- Stipend
- Tuition, fees & health insurance
- Institutional allowance
 - Research supplies, equipment, texts, travel

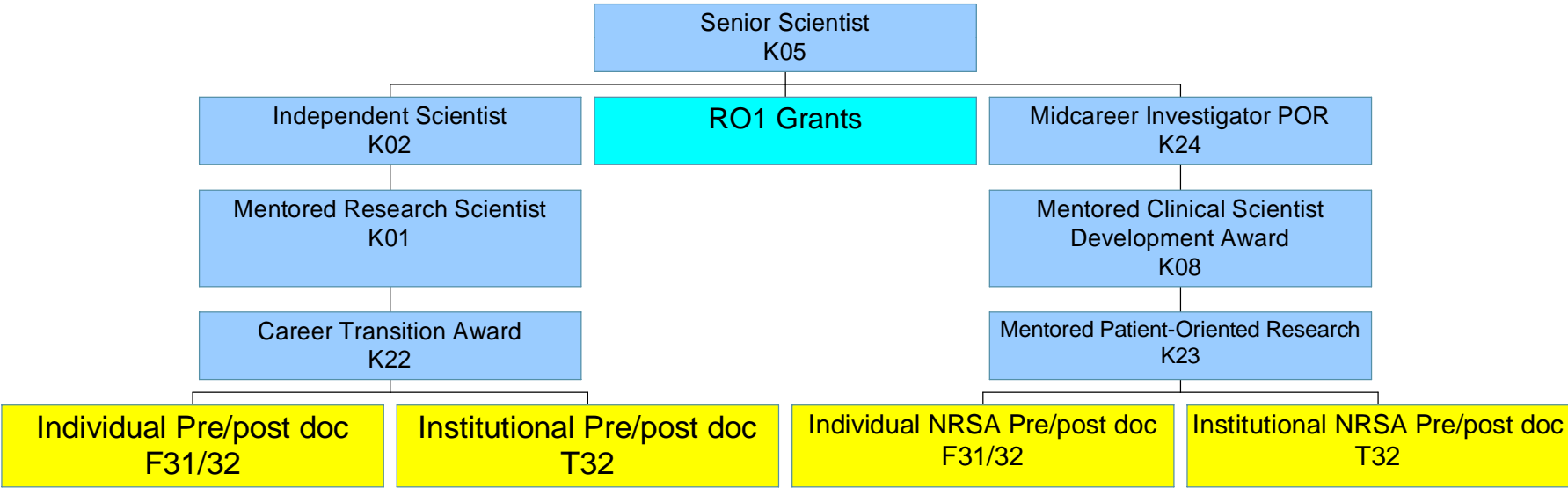


Eligibility

- US citizen, non-citizen national or permanent resident by time of award
- Enrolled or accepted to a doctoral program
- Registered Nurse (for NINR only)

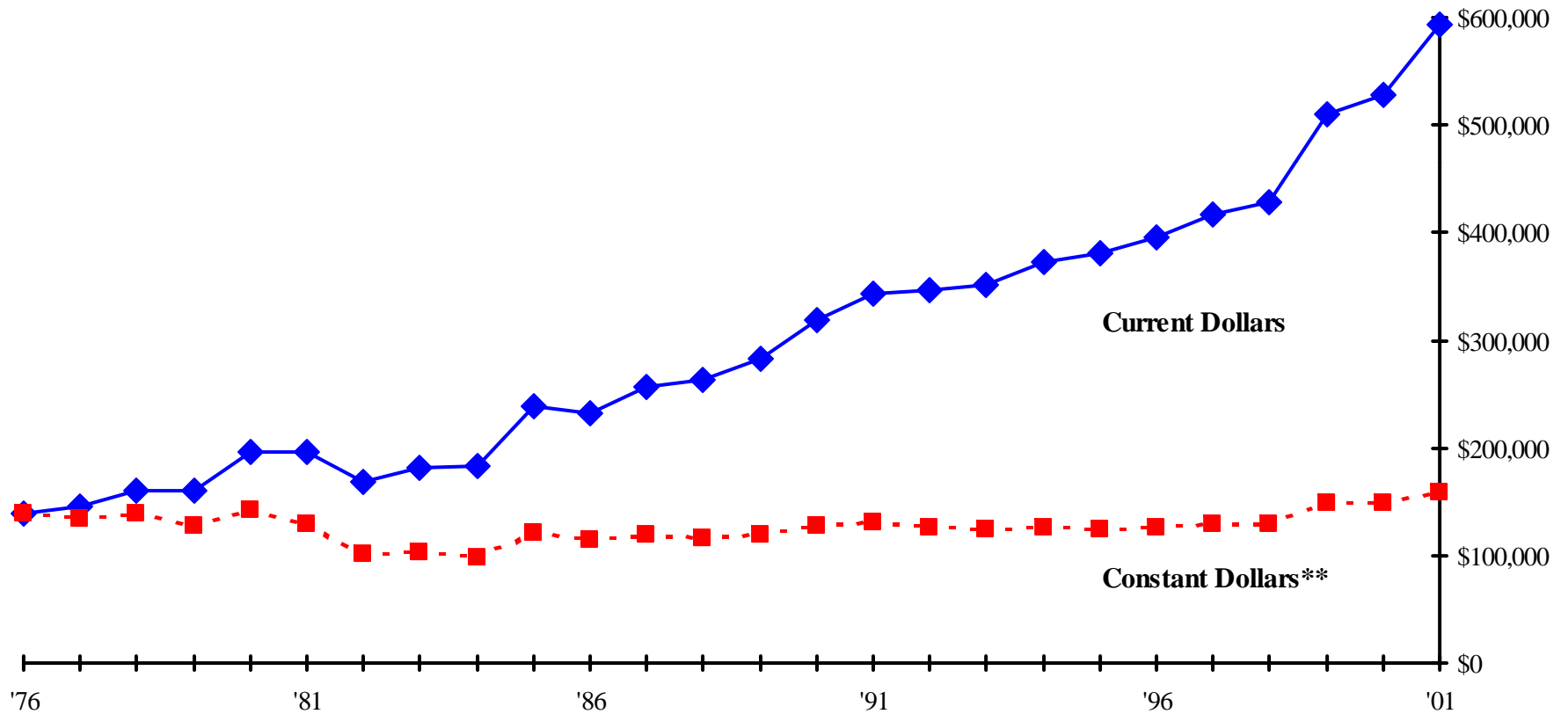


Career Cascade



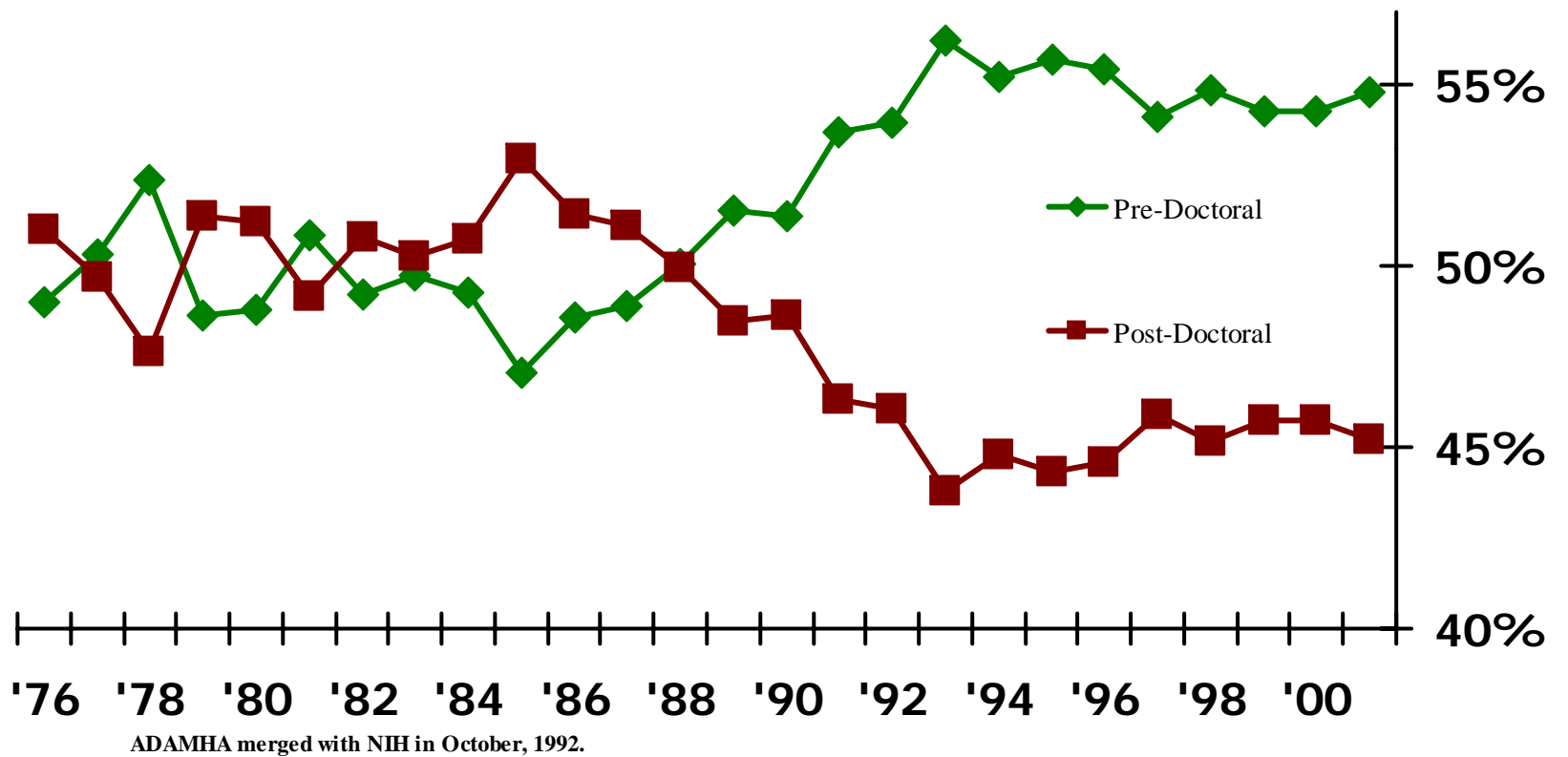
NIH Research Training Budget (Thousands)

Fiscal Years 1976 – 2001*

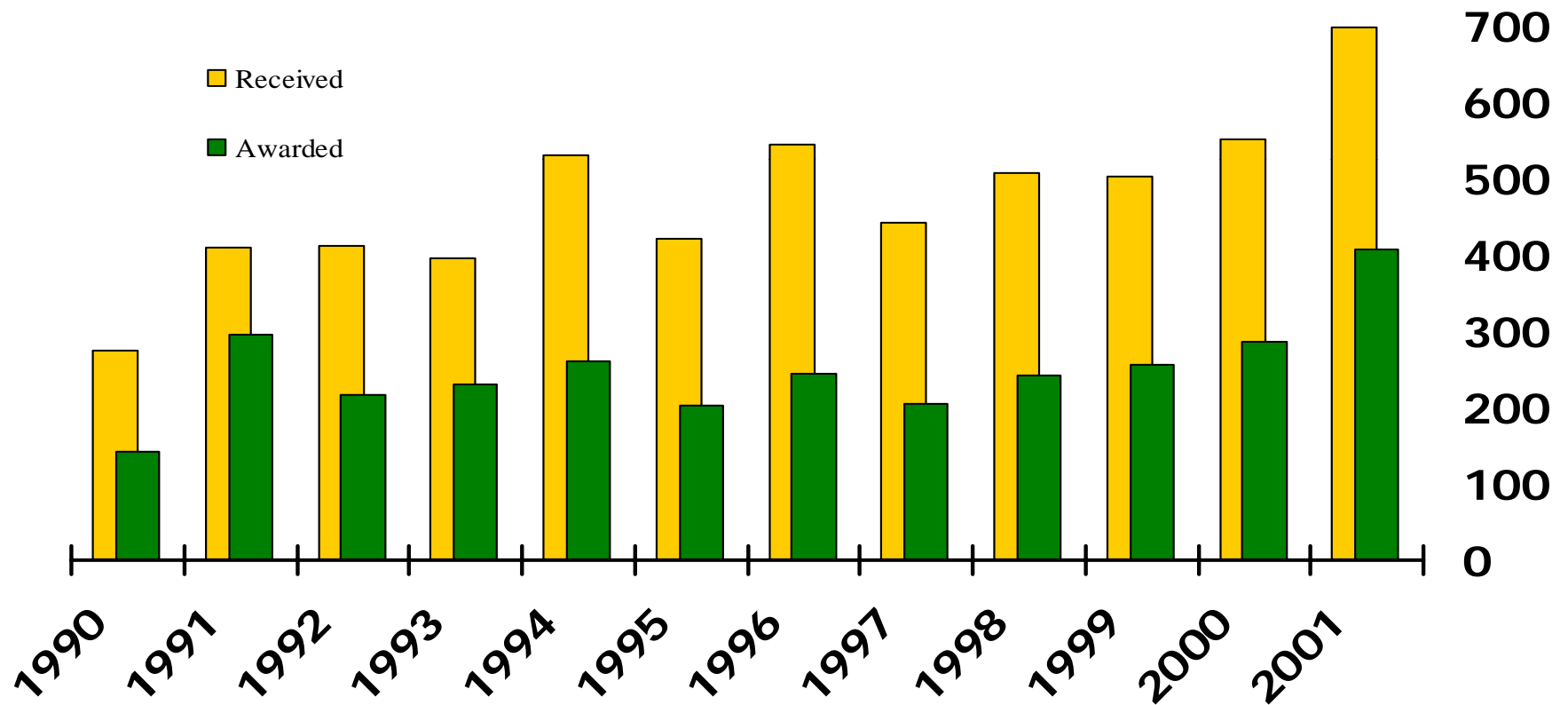


*ADAMHA merged with NIH in 10/92 **Adjusted using the Biomedical Research and Development Price Index (BRDPI)

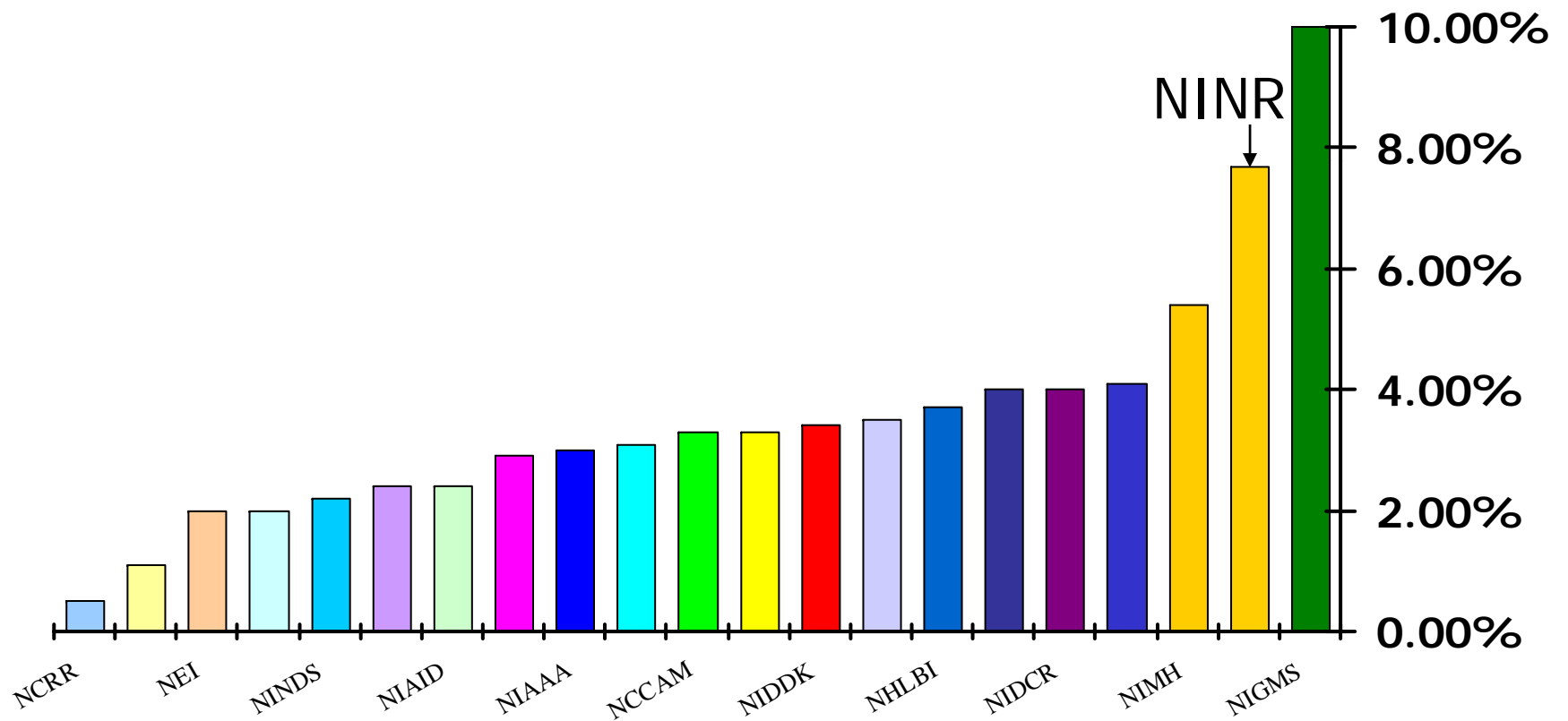
Pre-Doctoral and Post-Doctoral Training Positions as Percentages of All NIH Training Positions Fiscal Years 1976 - 2001



Number of Fellowship (F31) Applications Reviewed and Awarded Fiscal Years 1990 – 2001



Institute and Center Research Training Budgets as a Percentage of Their Total Budget Fiscal Year 2001





Currently funded NRSA

- Cecelia Roscigno - Children's Experiences Following Traumatic Brain Injury (NINR)
- Lynn Reinke – End of life caring needs for patients with COPD (NINR)
- Mary Taylor – Integrating Yoga into diabetes self-management (NCCAM)
- Sample of previously funded & finished
- Kristen Cloyes: Mental Illness in Super-Maximum Security Prison Units: B
- Jamie Goldstein-Shirley: End-of-Life Decision-Making: Beyond the Autonomy Model
- Sandra Jolley: Prenatal risk for post-partum depression



Applying for an NRSA Grant

- Finding the match
 - With a faculty sponsor
 - With a funding institution and their program
- Mechanics – getting the forms filled out
- Timing and supports
- Patience and perseverance



Matchmaking & Grant Writing

- Fit – science and faculty sponsor
- Fit – funding source & your career level
- Fit – your science and their priorities
- Fit – your writing & their review criteria
- Fit – your proposal & their application format



Balance

Training
Program



Research
Plan



Helpful guides

- Quick guide for grant applications
(Office of Behavioral and Social Science Research)
<http://deainfo.nci.nih.gov/EXTRA/EXTDOCS/gntapp.htm>
- Qualitative methods in health (OBSSR publications)
research<http://obssr.od.nih.gov/news/publications.html> (click on title)



Helpful guides (2)

- Parker B, Steeves R. (2005) "The National Research Service Award: Strategies for developing a successful proposal." J Prof Nurs. Jan-Feb;21(1):23-31. (go to online journals in healthlinks, or click on pubmed link in ONR website)
- Grant aids, UWSON website
<http://www.son.washington.edu/research/internal/GrantInformation/GrantInformation.asp>



Writing with an eye to the review

Review categories

- Candidate
- Research *training plan*
- Research *proposal*
- Sponsor
- Institutional commitment, resources

Review criteria can be found in the NRSA program announcement:
<http://grants.nih.gov/grants/guide/pa-files/PAR-05-091.html>



Review criteria - candidate

Candidate

- Previous undergraduate and graduate education, degrees, and academic performance;
- Relevant research experience, awards and honors, professional training, and publications;
- Evidence of the candidate's *commitment to a research career*;
- Letters of reference regarding the candidate's qualifications, commitment, and scientific potential



Review criteria – training plan

Research *Training* Plan

- Clarity, specificity, justification for the candidate's proposed research training needs
- Adequacy of the objectives, design, and components of the research training plan for meeting research training needs, including coursework and individualized supervised research experiences;
- Adequacy of plans to provide training in the responsible conduct of scientific research;
- (Candidacy students: names of dissertation committee members and the relevance of their expertise to the research training plan);
- *Potential of proposed research training to lead the candidate to a productive research career in scientific areas related to the NINR mission*



Review criteria – research proposal

Research Proposal

- Clarity, specificity, and scientific significance of the candidate's stated research interests, questions, and objectives;
- Organization, coherence, and thoroughness of the candidate's critical review and synthesis of the literature in support of the stated research interests, questions, and objectives;
- Adequacy and feasibility of the proposed research design, including
 - methods, measures, procedures, sample composition, subject recruitment, and data analytic plans.
 - Details and specificity of the research design should be commensurate with the candidate's level of research experience, training, and completed coursework;



Review criteria – Sponsor

Sponsor

- Qualifications of the sponsor as researcher, including *history of publications, successful competition for research support*
- Goodness of fit between research interests of candidate & scientific expertise, experience of sponsor(s)
- Evidence of sponsor's understanding of candidate's research training needs, ability to assist in meeting needs [judged from sponsor statement]
- Past *research* training record of sponsor



Review criteria – Institutional environment, commitment

- Adequacy of research training environment
 - Level of institution's commitment to research training, career development
 - Quality of facilities (labs, courses, computer access, subject access for example)
 - Availability of other research support



Review criteria – human subjects

- Adequacy of plans for the protection of human subjects, animals, and the environment, to the extent they may be adversely affected by the research proposed;
- Adequacy of plans to include women, children and minorities as subjects in research, if applicable
- Data and safety monitoring plan if clinical intervention



Mechanics

- Use the Public Health Service (PHS) 416-1 form – copies online at ONR website:
- Full set of useful information on SON ONR website (including this slide show):

<http://www.son.washington.edu/research/internal/GrantInformation/phs416/phs416.asp>



Mechanics - 2

- Start working with your faculty sponsor WELL in advance of deadlines (4-6 months)
- You may request ONR to help you set up a design or draft review (“modeling party”)
- Resources for ‘standard’ text (SON intranet)



Important Details

- Read the *CURRENT* program announcement and directions
 - Carefully
 - Several times
- Reference letters
- Description of program – individualized to your research training. This part of the sponsor statement but you should write a lot of it
- Plans to receive instruction in responsible conduct of research – be specific



Instruction in Responsible Conduct of Research

- Role seminar
- On being a scientist: Responsible conduct in research
<http://www.nap.edu/catalog/4917.html>
- Summer Biomedical Research Integrity series
 - 3-5 public lectures
 - Small group interdisciplinary case discussions



Important Details - 2

- Human Subjects
 - Indicate you will use just-in-time process
 - Start on human subjects application right away (either full application or approval in principal)
- Clinical research – data safety, etc



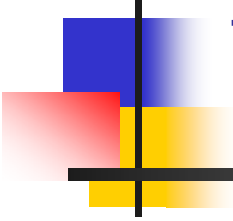
Winding through the bureaucracy

- Electronic routing and signatures from your sponsor's department
- Electronic routing and signature from the Associate Dean for Research
- Real signatures from grants and contracts
 - Grants specialist in ONR will help with how to make this all happen
- Getting it mailed



Patience & Perseverance

- 9 month wait to hear how you did
- Smile while you revise
- We do “remodeling parties” also
- Enjoy your grant when it comes



So, what if you aren't eligible for federal support?

Other sources of grant funding for pre and post-doctoral people



All doctoral students

- Hester McClaws fund
- Up to \$3500 for dissertation support
- Apply through Associate Dean for Academic Services
 - Candidate, with approved proposal
 - Abstract, endorsement by supervisory committee chair
 - Budget



Pre and post doctoral – external small grants (\$5000-15,000)

- Sigma Theta Tau International
<http://www.nursingsociety.org/research/main.html>
 - Local, Psi chapter-at-large
 - National, international
- American Nurses Foundation
<http://www.anfonline.org/>
- Tri-service nursing (active, reserve armed forces only)
- Specialty nursing organizations



How to find small grant funds

- Search Community of Science (COS) through UW office of research link

<http://www.washington.edu/research/cos/index.html>

- Often on ONR website when calls come out
- Search specific organization website
- Submit through UW with your supervisory chair as sponsor/PI of record for UW



Post-doctoral only

- SON internal Research Intramural Funding Program (RIFP) *if* connected to faculty research and will build to ongoing program
- Intramural UW funding that can be completed during period of appointment (examples: Alcohol & Drug Abuse Institute, some Research Royalty Fund)
- Extramural small grant funding that can be completed during period of post-doc appointment (see all the examples on prior slides)